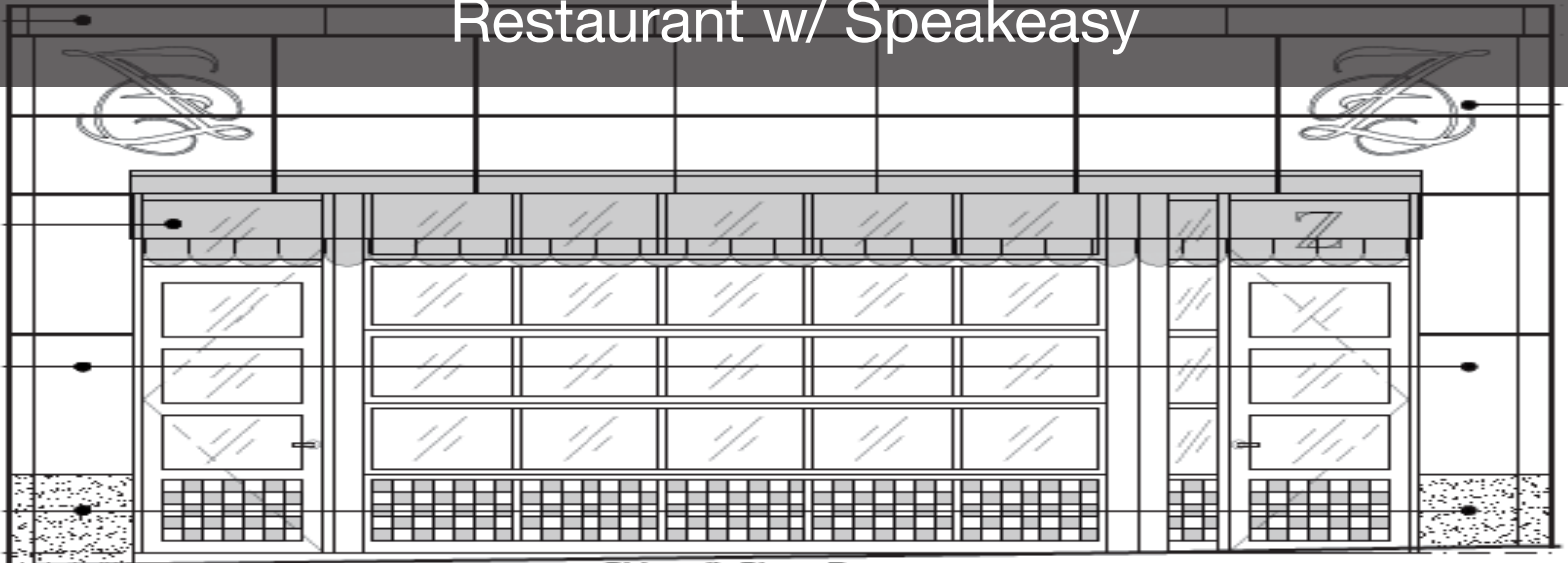


## Restaurant w/ Speakeasy



# 833 N Market St

Wilmington, Delaware 19801

## Property Features

- Renovated Historic Building
- Access and Frontage on N. Market St. & Shipley St.
- Approved for Restaurant & Speakeasy

### First Floor – Restaurant

- 2,187sf
- Table Seating – 46
- Bar Seating – 11

### Lower Level – Speakeasy

- 1,527sf
- Table Seating – 44
- Bar Seating – 11

- Four newly constructed 2-bedroom apartments

-- **FULLY RENTED!!**

- Spacious floor plans
- Granite Countertops
- Stainless Steel Appliances
- Ample Nearby Garage Parking

### Rental Rate:

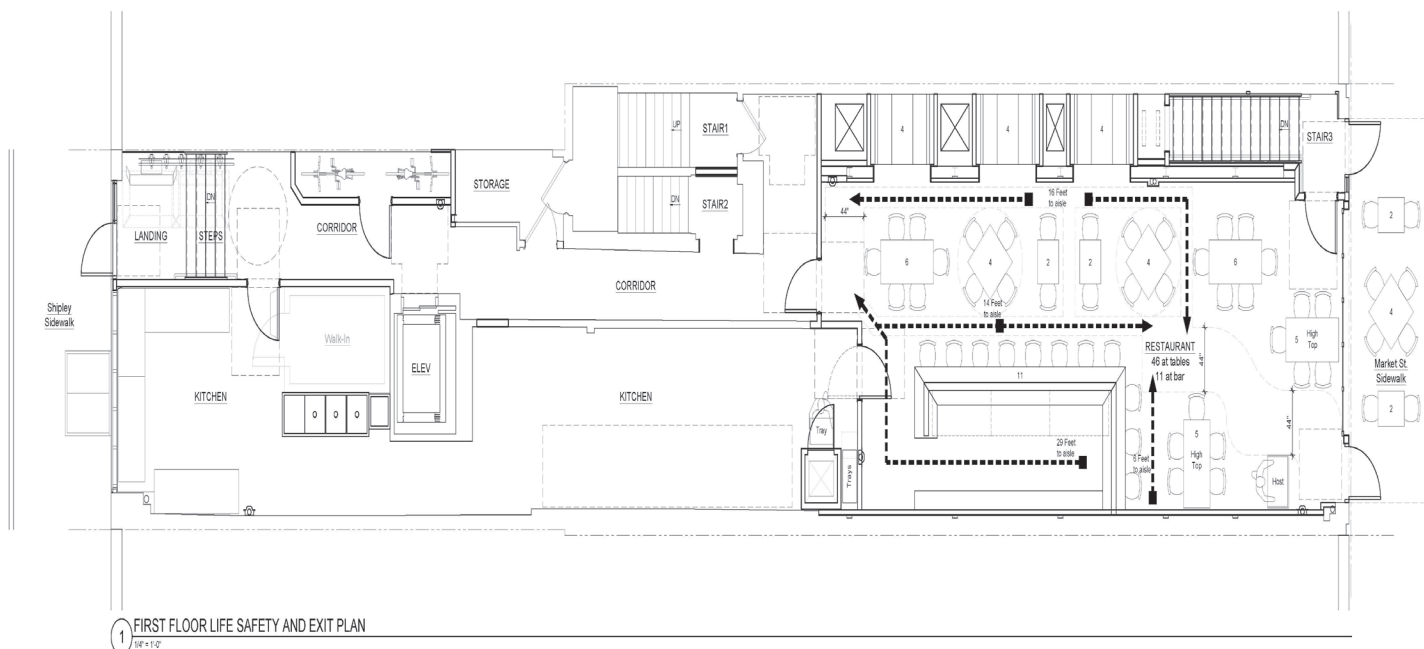
First Floor: \$4,500/mo. Lower Level: \$1,500/mo.  
*Ideal investment opportunity for owner/operator with income in place!*

***Call for sale pricing!***

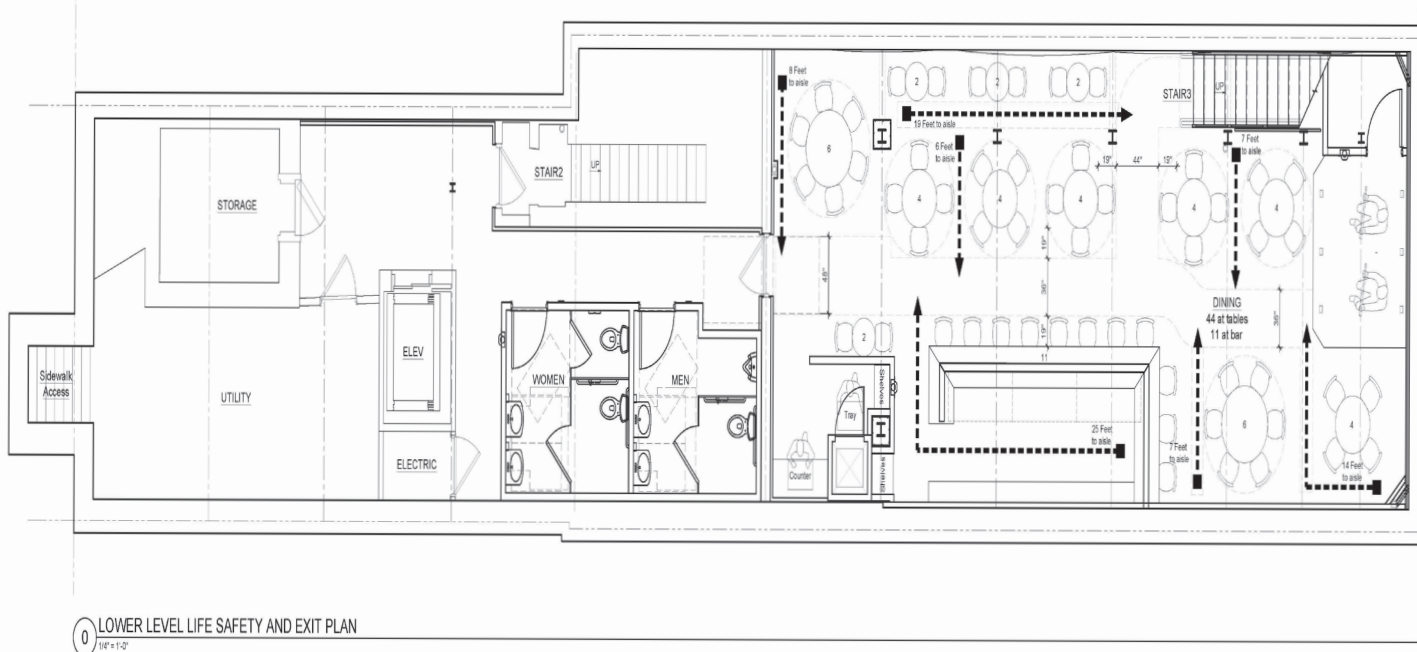


For more information:  
Neil Kilian SIOR, CCIM  
302 322 9500  
302 521 7291  
NeilKilian@emoryhill.com

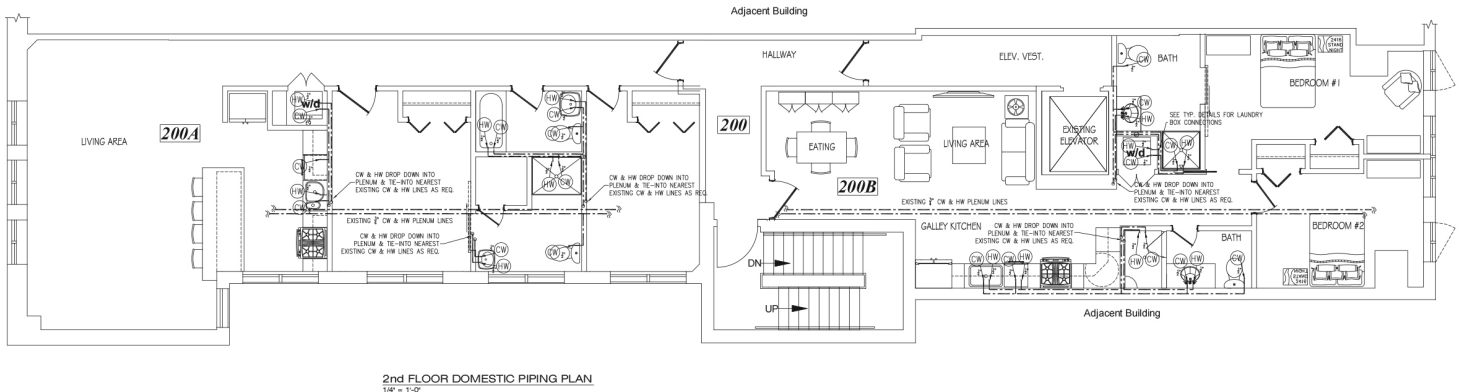
## First Floor



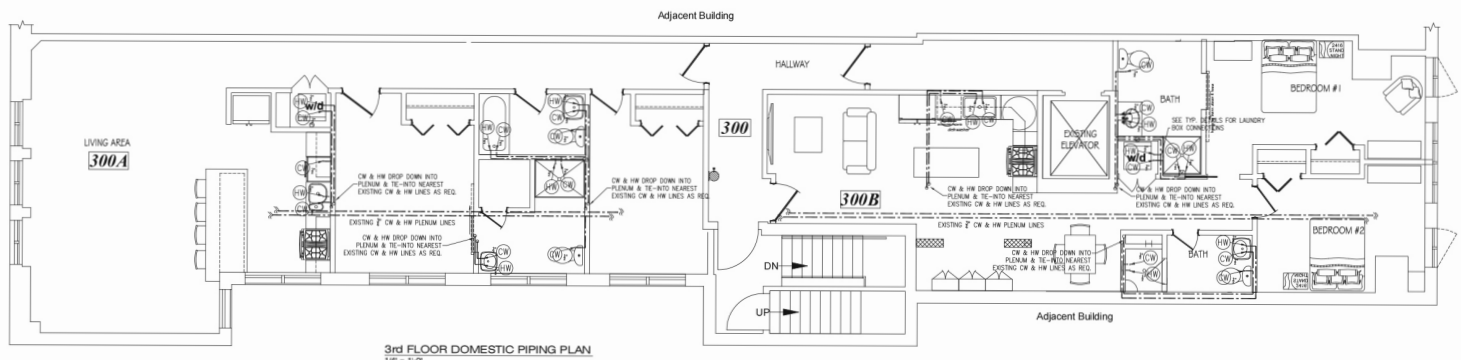
## Lower Level



## Apartment Floor Plan - 2nd Fl.



## Apartment Floor Plan - 3rd Fl.



Four tastefully remodeled 2 bedroom, 2 bath boutique apartments in a three story brownstone in Wilmington's central business district. Originally the Farmers Mutual Fire Insurance building, the apartments feature historic characteristics thoughtfully preserved including exposed brick walls, exposed ceiling rafters, and vaulted 12 ft ceilings. All units consist of an open kitchen to living room floor plan, large windows, high efficiency HVAC units, custom kitchens, an en suit master bedroom, front load washer/dryer, stylish ceiling fans and pendant lights, key-less entry, and more. There is a new elevator in the building and two secure entrances from N. Market and N. Shipley Streets. Enjoy the convenience of walking to the restaurants, shopping, and nightlife on bustling Market Street, and easy access to I-95, local parks, and the Riverfront attractions.

For more information:  
Neil Kilian SIOR, CCIM  
302 322 9500  
302 521 7291  
NeilKilian@emoryhill.com

## Interior Apartment Photos

